

Tiandy



TC-C38MS Spec: I5/A/E/Y/M/H/2.7-13.5mm/V4.0

8MP Starlight Motorized IR Dome Camera



Pro Series

KEY FEATURES

- Full Metal Housing
- Motorized Lens 2.7-13.5mm
- Up to 3840×2160@30fps
- S+265/H.265/H.264/M-JPEG
- Min. illumination Color: 0.003Lux@F1.6
- Smart IR, IR Range: 50m
- Support Video Analytics
- Support Human/Vehicle Classification
- Built-in Mic, audio I/O 1/1, alarm I/O 2/1
- Plugin Free
- Operating Conditions -35°C~65°C, 0~95% RH
- POE, IP67, IK10



Tiandy Technologies Co.,Ltd.

Email: sales@tiandy.com
Website: en.tiandy.com

Tel: +86-22-58596178
Fax: +86-22-58596048



SPECIFICATIONS

| Camera | |
|----------------------|---|
| Image Sensor | 1/2.8" CMOS |
| Signal System | PAL/NTSC |
| Min. Illumination | Color: 0.003Lux@ (F1.6, AGC ON), B/W: 0Lux with IR |
| Shutter Time | 1s to 1/100,000s |
| Day & Night | Dual IR Cut Filter with Auto Switch |
| Wide Dynamic Range | 120dB |
| Angle Adjustment | pan 0~330°, tilt 0~75°, rotate 0~350° |
| Lens | |
| Lens Type | Motorized |
| Focus | 2.7-13.5mm |
| Lens Mount | Φ14 |
| Aperture | F1.6~F3.3, Fixed |
| FOV | Horizontal field of view: 102.7°~29° |
| Illuminator | |
| IR LEDs | 18 |
| IR Range | Up to 50m |
| Wavelength | 850nm |
| White/Warmlight LEDs | N/A |
| Compression Standard | |
| Video Compression | S+265/H.265/H.264/M-JPEG |
| Video Bit Rate | 32Kbps~16Mbps |
| Audio Compression | G.711A/G.711U/ADPCM/AAC |
| Audio Bit Rate | 8K~48Kbps |
| Image | |
| Max. Resolution | 3840×2160 |
| Main Stream | PAL: 25fps (3840×2160, 3072×2048), 25fps (2560×1440, 2304×1296, 1920×1080, 1280×720) NTSC: 30fps (3840×2160, 3072×2048), 30fps (2560×1440, 2304×1296, 1920×1080, 1280×720) |
| Sub Stream | PAL: 25fps (704×576, 704×288, 640×480, 352×288) NTSC: 30fps (704×480, 704×240, 640×480, 352×240) |
| Third Stream | PAL: 25fps (704×576, 704×288, 640×480, 352×288) NTSC: 30fps (704×480, 704×240, 640×360, 352×240) |
| Image Setting | Saturation, brightness, contrast, sharpness, adjustable by client software or web browser |
| Image Enhancement | BLC/3D DNR/HLC/Corridor Format |
| ROI | Support 8 fixed regions of coding |
| OSD | 16×16, 24×24, 32×32, 48×48, 64×64, 96×96, adaptable size, Letters Such as Week, Date, Time, Total 8 Regions |
| Picture Overlay | Yes |
| Privacy Mask | Yes, 4 regions |
| Smart Defog | Yes |
| Feature | |
| Alarm Trigger | Event Input, Event Output, Motion Detection, Mask Alarm, Disk Full, Disk R/W Error, IP Address Conflict, MAC Address Conflict, FTP Server Exception |
| Video Analytics | Tripwire, Double Tripwire, Perimeter, Object Abandon, Object Lost, Loitering, Running, Parking, Crowded, People Counting, On Duty Detection, Video Abnormal, Audio Abnormal, Heatmap, Safety Helmet Detection, Human/Vehicle Classification |
| Early Warning(EW) | N/A |



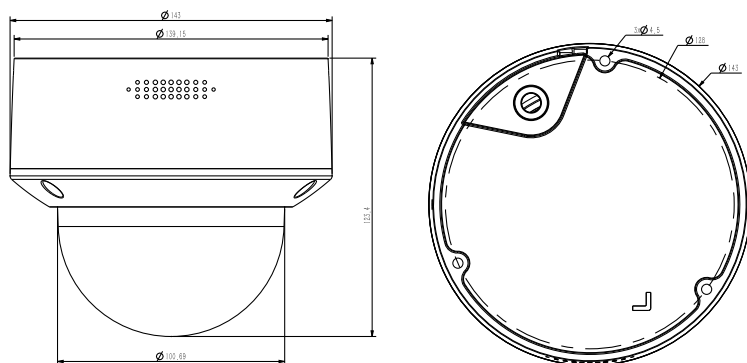
| Network | |
|-------------------------|--|
| ANR | Yes, auto store video in SD card when NVR disconnected, and upload video to NVR when resumed connection (Only Support Tiandy ANR NVR) |
| Protocols | TCP/IP, ICMP, HTTP, HTTPS, DHCP, DNS, DDNS, RTP, RTSP, RTCP, PPPoE, MULTICAST, UPnP, FTP, IPV4, NTP, SMTP, IGMP, 802.1x, QoS, IPV6, ARP, UDP, SNMP, SSL, Telnet, SNTP, RTMP, SFTP, NFS |
| System Compatibility | ONVIF (PROFILE S/T/G/M), SDK, Milestone, CGI, P2P |
| Remote Connection | ≤7 |
| Client | Easy7, EasyLive |
| Web Version | Web6 |
| Interface | |
| Communication Interface | 1 RJ45 10M/ 100M self adaptive Ethernet port, RS 485 |
| Audio | 1/1, Mic in |
| Alarm | 2/1 |
| Reset Button | Yes |
| On-board storage | Built-in Micro SD card slot, up to 512 GB |
| General | |
| Firmware Version | - |
| Web Client Language | 17 languages English, Russian, Spanish, Korean, Italian, Turkish, Simple Chinese, Traditional Chinese, Thai, French, Polish, Dutch, Hebraism, Arabic, Vietnamese, Ukrainian, German |
| Operating Conditions | -35°C ~ 65°C, 0 ~ 95% RH |
| Power Supply | DC12V±25%/PoE |
| Power Consumption | MAX: 7.5W (12V) MAX: 9W (PoE) |
| Protection | IP67, IK10, Lightning protection, surge protection and voltage transient protection meets EN 55035:2017 |
| Heater | N/A |
| Dimensions | Φ143×124mm (Φ5.63×4.88inch) |
| Weight | 0.95Kg (2.09lb) |

* Listed resolutions are only selectable options. It does not mean that all streams can work at their maximum resolution at the same time.

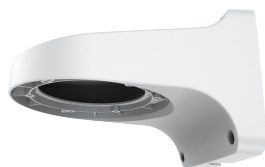
AVAILABLE MODEL

TC-C38MS SPEC: I5/A/E/Y/M/H/2.7-13.5MM/V4.0

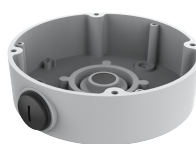
DIMENSIONS (Unit: mm)



ACCESSORIES



A28
Wall Mount



TC-P54BM Spec: V3
Junction Box

DISTRIBUTED BY



Tiandy Technologies Co.,Ltd.

Email: sales@tiandy.com
Website: en.tiandy.com

Tel: +86-22-58596178
Fax: +86-22-58596048